

How To Install the MaceratingFlo Upflush Toilet System Guide



**MACERATING
FLO**

Innovation For A Better Flow



At MaceratingFlo, we understand that even the best plumbing systems can face challenges.

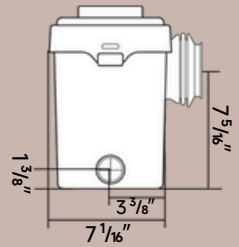
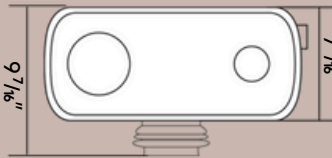
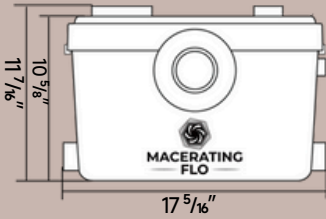
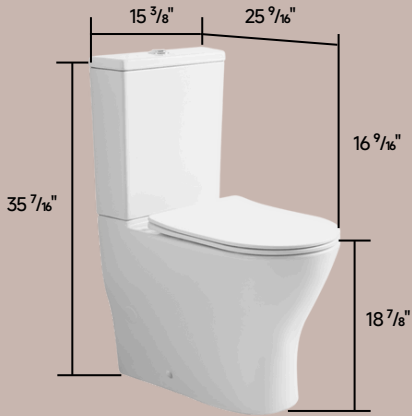
Our goal is to make installing the MaceratingFlo upflush toilet system straightforward and simple, achievable in perhaps half a day's work.

While our systems are designed to be user-friendly, errors can still occur. That's why we provide detailed guidance and support. Drawing from industry practices and considering the latest technology and home needs, we ensure you can easily and correctly install your system.

Whether you're a beginner or experienced installer, following our step-by-step guide ensures successful installation and avoids common pitfalls.



Toilet & Pump Dimensions

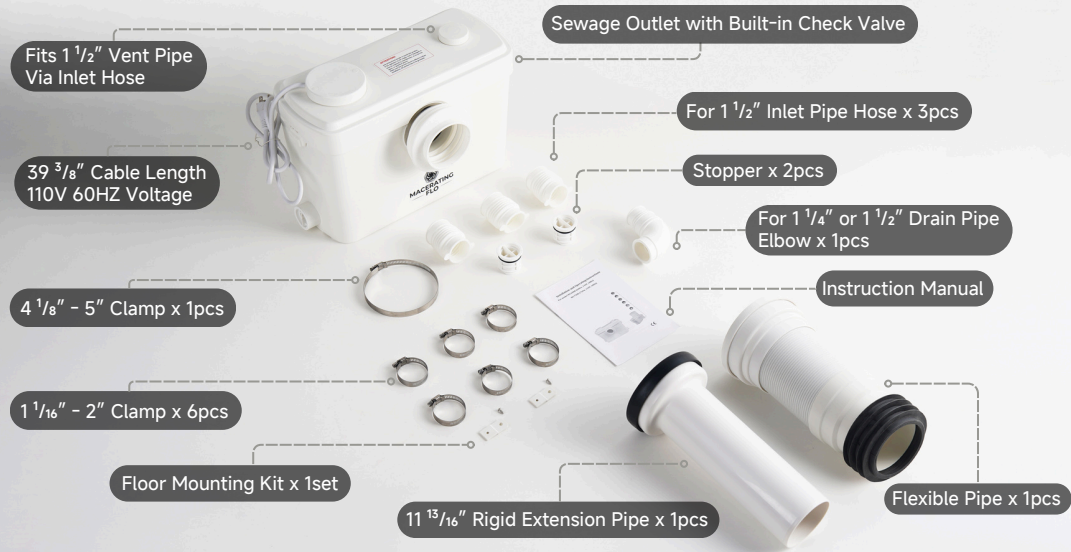


38 ³/₈"

With Extension Pipe

Step 1

Read the installation instructions included with the MaceratingFlo unit. Identify all provided components and acquire any needed 1 1/2 or 1 1/4 inch PVC pipes and fittings, along with PVC fasteners, cleaner, primer, and glue.



Step 2: Choose the installation location within the maximum distance range: For installation distances, the MaceratingFlo Ultra 750W Pump supports up to 36 feet below sewer lines and 328 feet from the soil stack. The Pro 600W Pump allows for 30 feet below sewer lines and 262 feet from the soil stack. If you plan to connect additional fixtures to the MaceratingFlo unit, they must be on the same structural level.

Step 2



Pro 600W



Ultra 750W

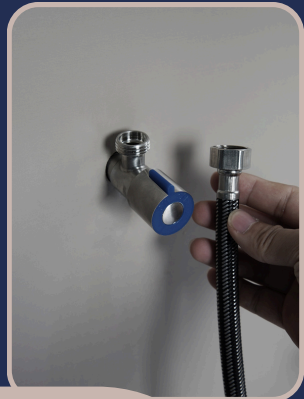
Step 3

Cut into the soil stack material and install a Y-connector for the macerator discharge pipe.



Step 4

When installing with a concealed macerating pump, ensure about 12 inches of space behind the pump frame. When installing near an exterior wall, leave a few inches behind the macerator for insulation.



Step 5

Establish or access a fresh water supply in the installation area, with a shut-off valve and water line prepared in advance, using cold water for toilet installation.



Step 6

A nearby 15-amp circuit is needed to operate the macerating pump. Due to proximity to water, the circuit should be protected with a Ground Fault Circuit Interrupter (GFCI) in actual installations.

Step 7

Now prepare to install the macerator unit, starting with attaching elbows and hoses to the corresponding pump outlets and inlets, securing them with clamps.



- ① Position the pump where you want it.



- ② Install the discharge elbow.



Note: The pump's sewage outlet has an integrated check valve, eliminating the need for an additional check valve in the elbow.

Secure the elbow with a clamp. Ensure it's properly positioned: press down and tighten with a flathead screwdriver.



- ③ In the same way, insert the hose into the pump's water inlet and continue to secure it with a clamp.

- ④ For any unused water inlets, insert stopper plugs and twist to tighten.



Step 8

Connect the pump to PVC pipe, ensuring it's primed and glued. Arrange PVC pipes as required, using two 45° elbows for right-angle turns for smoother flow. Insulate pipes in areas where freezing is a concern.



① Insert a 1 1/4 inch sewage PVC pipe above the right side of the pump, secured with a clamp.



We recommend installing a stop and waste valve in the drain pipe during setup for easier maintenance of the toilet or pump later on.



② To connect to a sink or shower waste, use the pump's left and right inlets. Ensure the hot water temperature for bathtubs and faucets is 131°F or lower.

Use a 1 1/2 inch pipe for connection, preferably with at least a 10° slope for gravity flow into the pump.

③ The top right corner of the pump has a dual-use filter with activated carbon.



④ You can also connect it to your exhaust system. Insert a hose, secure with a clamp, then connect to a 1 1/2 inch vent pipe.

Step 9

After securing the PVC pipes, start positioning and securing the toilet brackets.



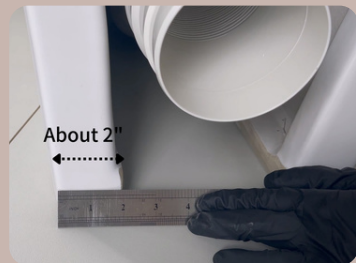
Flexible Pipe



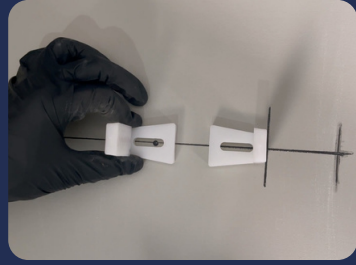
Rigid Pipe



- Select the extension pipe from the package that best fits your setup.
- Attach one end of the pipe to the rear outlet of the toilet.
- Insert the other end of this pipe into the rubber ring in the middle of the pump and carefully move the toilet to its final position.



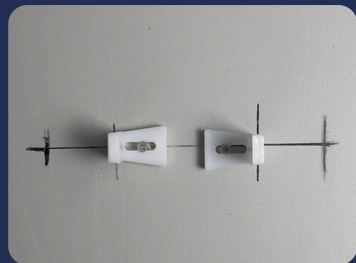
- Identify the exact location for securing the toilet bowl later.
- Use a pencil to locate and mark the two small holes on each side of the bowl.
- Move the bowl aside, measure the thickness of each side of the toilet (about 2").



Extend the lines you marked earlier by 2" on each side, and align the white brackets along the extended lines.



Use a power drill to make two holes, then insert expansion bolts with a hammer.



Reposition the brackets over the bolts and tighten them with the provided screws.

Note: This is the final positioning. The purpose of this setup is to provide a solid, fixed point for your toilet, ensuring it stays firmly in place.

Step 10

Connect water tank & toilet bowl.

- ① Tighten the tank-to-bowl bolt set in order.



- ② Connect the water supply line. Place the black gasket on the top of the bowl, align each opening, and set the tank on top.



- ③ Tighten the bottom nuts, then firmly secure the screws to prevent leaks, using a screwdriver as needed for assistance.

Step 11

Attach dual flush push button.



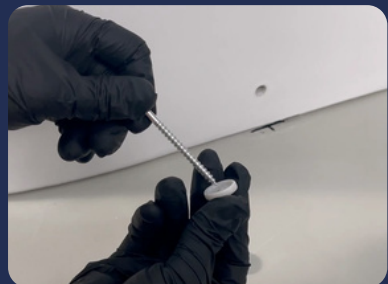
Step 12

Connect toilet bowl & pump.



Step 13

Fix and cover with white caps.





Step 14

Connect the supply water line and plug in the pump, beginning to test if the toilet and pump operate smoothly.



Step 15

After successful testing, install the soft-close toilet seat.



CONGRATULATIONS!



Your MaceratingFlo unit is now correctly installed.



CONTACT US

For any queries or concerns, feel free to reach out to us at



cs@maceratingflo.com



(+1) 626-670-9903



www.maceratingflo.com